

PC T8 TEC, 18 – 58 W

PC TEC T8



Product description

- _ CELMA Energy Efficiency Index A2
- _ Nominal life-time up to 30,000 h (at t_a 50 °C with a failure rate \leq 0.3 % per 1,000 h)
- _ Large temperature range (for values see table)
- _ Lamp preheating for min. 30,000 starts without replacement of lamps
- _ Automatic start after replacement of defective lamps
- _ Push terminal for rapid automatic or manual wiring
- _ Temperature protection as per EN 61347-2-3 C5e

Website

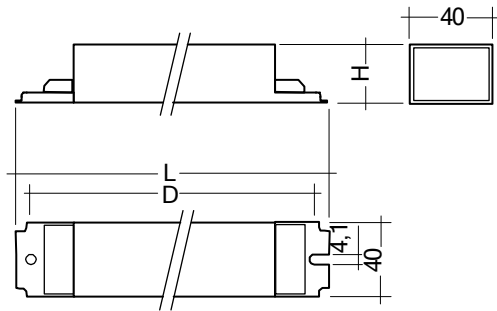
<http://www.tridonic.com/87500255>



PC T8 TEC, 18 – 58 W

PC TEC T8

The complete data sheet for this product is available in the Downloads section.



Ordering data

Type	Article number ^①	Packaging, carton	Packaging, low volume	Packaging, high volume	Weight per pc.
For luminaires with 1 lamp					
PC 1x18 T8 TEC	87500255	60 pc(s).	1,260 pc(s).	3,780 pc(s).	0.104 kg

Technical data

Mains voltage range	220 – 240 V
AC voltage range	198 – 264 V
Mains frequency	50 / 60 Hz
Overvoltage protection	320 V AC, 1 h (280 V AC, 48 h for 2x58 W applications)
Time to light	≤ 2 s
Operating frequency	> 40 kHz
Type of protection	IP20

Approval marks



Standards

EN 55015, EN 61000-3-2, EN 61000-3-3, EN 61347-1, EN 61347-2-3, EN 61547

Specific technical data

Lamp wattage	Lamp type	Type	Article number	Dimensions L x W x H	Hole spacing D	Lamp power	Circuit power	EEI	Current at 50 Hz		λ at 50 Hz		tc point max.	Ambient temperature ta
									220 V	240 V	220 V	240 V		
1 x 18 W	T26 (T8)	PC 1x18 T8 TEC	87500255	150 x 40 x 28 mm	138 mm	17.0 W	19.0 W	A2	0.09 A	0.09 A	0.97	0.97	65 °C	-10 ... +50 °C
1 x 18 W	TC-L	PC 1x18 T8 TEC	87500255	150 x 40 x 28 mm	138 mm	16.0 W	18.0 W	A2	0.08 A	0.08 A	0.97	0.97	65 °C	-10 ... +50 °C

① Article number 87500150 and 87500151 without RCM approval mark.

② Test result at 230 V, 50 Hz.